

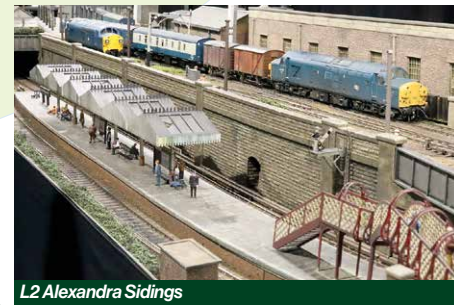
# The layouts

## L1 Test Track

*Nelson Keen and the East Midlands Group*  
Come and exercise your locos or try out your purchases on the test track which caters for most wheel standards (except S7 or coarse scale) employing 12v or 24v either DC or DCC operation. Live Steam running will be a feature on this track. Clearances between the lines also permit 16mm scale running on 32mm track.

## L2 Alexandra Sidings

*Dave Hampson*  
Alexandra Sidings is a 7mm scale layout which represents a small fictional station and parcels depot in North West England. The layout is split level, with the lower level comprising a station and a separate upper level with an urban parcels concentration depot. It is set in the BR blue era in the mid to late 1970s. Passenger services are provided by a range of DMU classes, together with a class 504 Bury EMU. Engineers trains are frequent visitors, with a fully working 76 ton crane seen occasionally.



L2 Alexandra Sidings

## L3 Penrhyn Quarries

*Bill Ferguson*  
Penrhyn Quarry captures Welsh Slate quarry workings in 10mm scale. This narrow gauge layout set on standard gauge 16.5mm track features slate buildings inspired by historic Caernarvonshire railways. This striking winter scene includes a track running past a frozen waterfall and through snow covered landscapes.



L3 Penrhyn Quarries

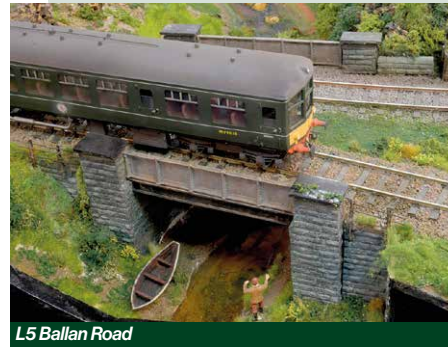
## L4 Test Track

*David Ellis and the Liverpool and West Lancs Group*

The test track is available for visitors to bring locomotives and stock for testing and running purposes. There are four continuous loops, one of which can be switched between 2-rail and 3-rail. All four tracks can be powered with DC and any one of those can optionally be changed over to a DCC controller.

## L5 Ballan Road

*David Forshaw and the Liverpool and West Lancs Group*  
Ballan Road is set in a fictitious village on the Cumbrian coast line during the late 1950s to early 1960s. The nearby station has remained open mainly to allow workers to reach the local



L5 Ballan Road

chemical works, which also provides some freight traffic. The engine shed is still operational to provide shunters for the works. Some modernisation has appeared in the form of diesel traction, but otherwise it is a scene unchanged in many years.

## L6 Hillport Goods

*Steve Farmer*

The layout is set in North Staffordshire in the period of the late 70s and represents a small urban yard of the type that was soon to disappear. The yard handles mainly commodities and sundries traffic in vans and open wagons which are brought in on trip workings. Also to be seen is domestic coal traffic along with tanks of heating oil to the Knype fuels siding. Traffic to Midland steel and Albion cement terminal also come into the yard to run round or drop wagons off to be shunted out.



L6 Hillport Goods

## L7 Bury, Thorn and Sons

*Joshua Haworth*

Bury, Thorn & Sons represents a small portion of a fictitious tar distillery set somewhere in the West Riding of Yorkshire in the late 1950s to early 1960s, with the rest of the works and the British Rail exchange sidings being located 'off scene.' Traffic consists of inbound tar in square tank wagons, with the refined products leaving in Class A & B tanks. General merchandise and barrels are also transhipped in the large warehouse and workshop units along the front of the layout.



L7 Bury, Thorn and Sons

## L8 Hassell Harbour Bridge

*Iain Chippendale and Alsager Railway Association*

Hassell Harbour Bridge is based on large bow arched steel bridges, the inspiration was the bridge over the River Wear at Sunderland. The model bridge was originally built in 2005 and was part of a bigger layout now scrapped. The bridge was saved and incorporated into a new compact continuous run O gauge exhibition layout. One aim has been to demonstrate space saving O gauge running on 4 foot 6 inch radius curves. We run trains from different eras, so we can mix diesel and steam, also you can see a working wagon incline and shunting on the dockside.

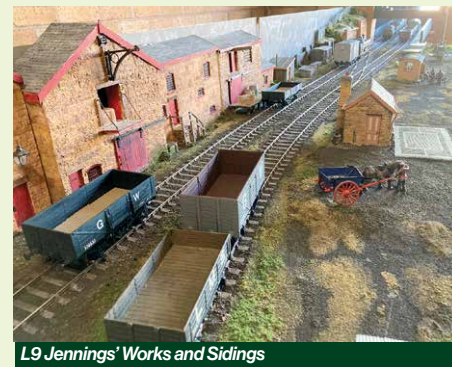


L8 Hassell Harbour Bridge Mk2

## L9 Jennings' Works and Sidings

*Keith Hayward*

Jennings' Works and Sidings is a small industrial railway set in the south midlands. All the major structures are scratch built, largely as free-lance buildings loosely based on real places. The stone clad buildings are card and Polyfilla coated, with the stone etched by hand and painted with water colours. The large wagon repair shed, and the engine shed are also constructed from card, clad with wooden sleeper strips and plastic brick sheet. Many of the key structures have fully detailed interiors and are illuminated.

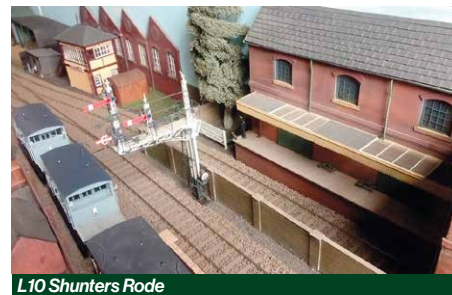


L9 Jennings' Works and Sidings

## L10 Shunters Rode

*Michael Taylor*

The track is purely fictitious but we like to think it's part of the Somerset and Dorset. There is a lot going on such as the dairy, the agriculture yard, the goods shed and cattle dock which gives rise to quite a lot of shunting. All main signals are fully operational and are hand built by my good friend Tony who also created the man doing the welding. Track Control is by analogue DC.



L10 Shunters Rode

# O Gauge Model Railway and Trade Show



# 24



Hillport Goods  
© Tony Andrews

# Winter Show

Saturday 7th December 10.00-16.00

Robin Park Leisure Centre, Loire Drive, Newtown, Wigan WN5 0UL

Ticket admits purchaser, partner and their children under 16

[www.gaugeoguild.com](http://www.gaugeoguild.com)



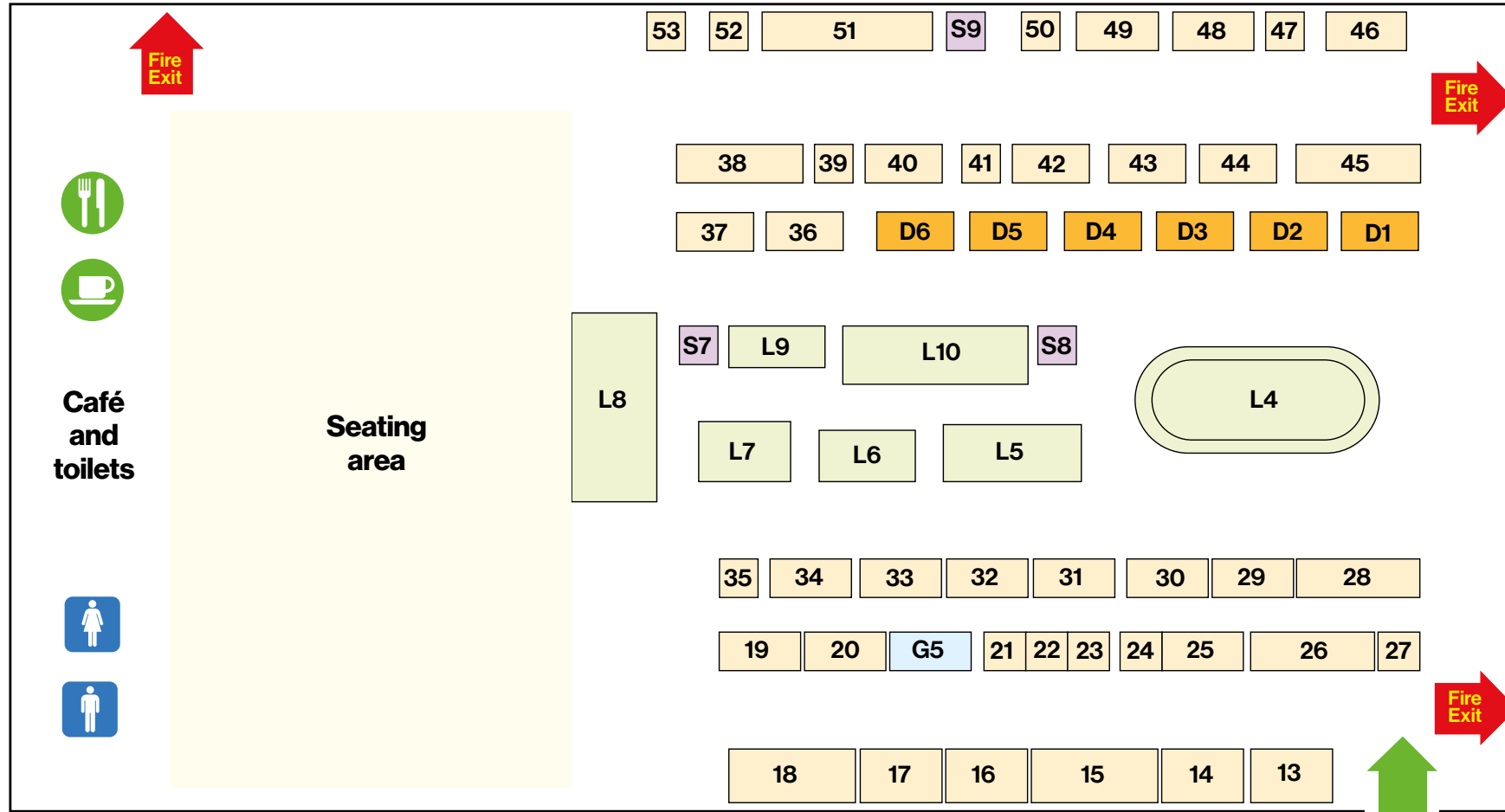
# Winter Show Floor Plan • Robin Park Leisure Centre

## Trade Stands by Number

- 1 Ellis Clark Trains
- 2 Nick Tozer Railway Books
- 3 Simon's Sort Out
- 4 Squires Model and Craft Tools
- 5 Slaters (Plastikard) Ltd
- 6 LCUT Creative
- 7 P. R. Model Railway Products
- 8 Peter Clark Models
- 9 SBT Developments
- 10 Gloforce
- 11 North Western Models
- 12 DecorFab Personalised Gifts
- 13 Steamline Ltd
- 14 Torri Laser
- 15 Footplate Models
- 16 Fine Scale Brass (UK)
- 17 White Rose Modelworks
- 18 Dapol Ltd
- 19 Transporters
- 20 Buzz Models
- 21 AirFramed Glass Display Cases
- 22 Walsworth Models
- 23 JS Models
- 24 MMR Models
- 25 Sanspareil ICS
- 26 Bill Hudson Transport Books
- 27 Metalsmith (Leeds) Ltd
- 28 Northumbrian Painting Services
- 29 1039 Models
- 30 C & L Finescale Track Building Systems Ltd
- 31 Haywood Railway
- 32 Made in Manchester Models
- 33 Carl Worthington - sale of estate items
- 34 Poppy's Woodtech
- 35 HMRS
- 36 Gladiator Model Kits
- 37 Premier Components
- 38 James Green Artist
- 39 Lanky Kits
- 40 Amberly Components
- 41 Craft Lighting
- 42 EBMA Hobby & Craft
- 43 Ragstone Models
- 44 Greenwood Railway Products
- 45 Duncan Models
- 46 Ron Connor Totem Signs
- 47 Allan Lewis - sale of private collection
- 48 Scorpio Models
- 49 Tower Models
- 50 Tower Collection Blackpool
- 51 Skytrex Model Railways
- 52 Brushes 4 Models
- 53 Connoisseur Models

## Trade Stands Alphabetical

- |  |    |
|--|----|
| 1039 Models                                | 29 |
| AirFramed Glass Display Cases              | 21 |
| Allan Lewis - sale of private collection   | 47 |
| Amberly Components                         | 40 |
| Bill Hudson Transport Books                | 26 |
| Brushes 4 Models                           | 52 |
| Buzz Models                                | 20 |
| C & L Finescale Track Building Systems Ltd | 30 |
| Carl Worthington - sale of estate items    | 33 |
| Connoisseur Models                         | 53 |
| Craft Lighting                             | 41 |
| Dapol Ltd                                  | 18 |
| DecorFab Personalised Gifts                | 12 |
| Duncan Models                              | 45 |
| EBMA Hobby & Craft                         | 42 |
| Ellis Clark Trains                         | 1  |
| Fine Scale Brass (UK)                      | 16 |
| Footplate Models                           | 15 |
| Gladiator Model Kits                       | 36 |
| Gloforce                                   | 10 |
| Greenwood Railway Products                 | 44 |
| Haywood Railway                            | 31 |
| HMRS                                       | 35 |
| James Green Artist                         | 38 |
| JS Models                                  | 23 |
| Lanky Kits                                 | 39 |
| LCUT Creative                              | 6  |
| Made in Manchester Models                  | 32 |
| Metalsmith (Leeds) Ltd                     | 27 |
| MMR Models                                 | 24 |
| Nick Tozer Railway Books                   | 2  |
| North Western Models                       | 11 |
| Northumbrian Painting Services             | 28 |
| P. R. Model Railway Products               | 7  |
| Peter Clark Models                         | 8  |
| Poppy's Woodtech                           | 34 |
| Premier Components                         | 37 |
| Ragstone Models                            | 43 |
| Ron Connor Totem Signs                     | 46 |
| Sanspareil ICS                             | 25 |
| SBT Developments                           | 9  |
| Scorpio Models                             | 48 |
| Simon's Sort Out                           | 3  |
| Skytrex Model Railways                     | 51 |
| Slaters (Plastikard) Ltd                   | 5  |
| Squires Model and Craft Tools              | 4  |
| Steamline Ltd                              | 13 |
| Torri Laser                                | 14 |
| Tower Collection Blackpool                 | 50 |
| Tower Models                               | 49 |
| Transporters                               | 19 |
| Walsworth Models                           | 22 |
| White Rose Modelworks                      | 17 |



Plan is schematic and not to scale

**Tennis Hall (Hall 2)**

**There is no visitor access to Hall 2 until the show opens**

## Society / Group Stands

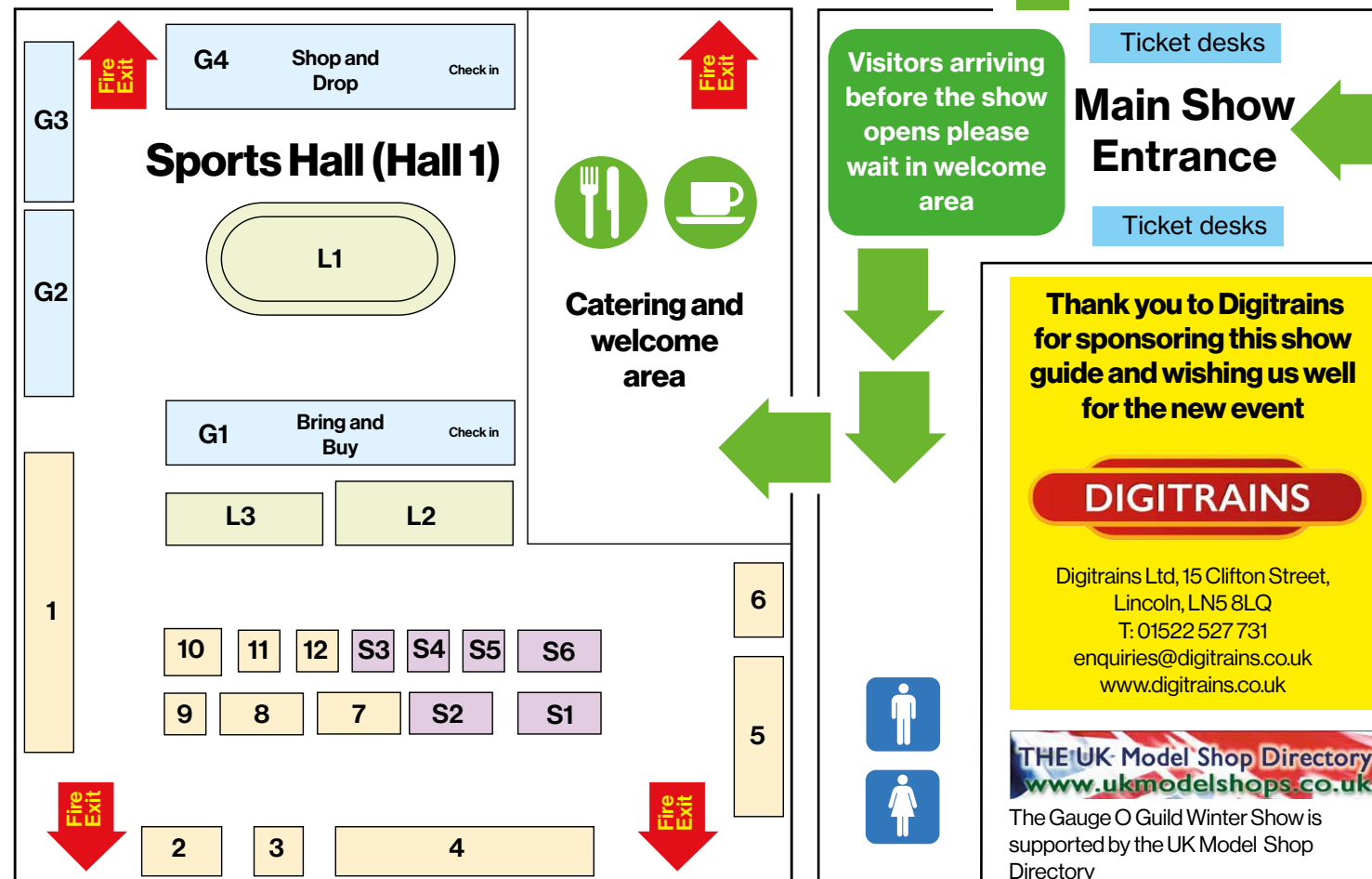
- 1 Telford Steam Railway
- 2 MIOG
- 3 Warley MRC
- 4 Scale7 Group
- 5 Tallylyn Railway
- 6 Wigan and District MES
- 7 Alsager Railway Association
- 8 Liverpool and West Lancs OGG
- 9 Preston O Gauge Group

## Guild Stands

- G1 Bring & Buy
- G2 Guild promotions
- G3 Guild sales
- G4 Shop & Drop / Left Luggage
- G5 Leaflet table

## Demonstrators

- D1 Dan Evason**  
*showing how to paint figures*
- D2 Nick Dunhill**  
*on building locos and scratch building*
- D3 Rob Bishop**  
*unlocking the mysteries of soldering*
- D4 Robin Taylor**  
*on cottages and scenic modelling*
- D5 Andy Small**  
*how to weather locos and rolling stock*
- D6 Fiona Forty**  
*showing how to fit your locos for DCC*



Visitors arriving before the show opens please wait in welcome area

**Thank you to Digitrains for sponsoring this show guide and wishing us well for the new event**

**DIGITRAINS**

Digitrains Ltd, 15 Clifton Street,  
Lincoln, LN5 8LQ  
T: 01522 527 731  
enquiries@digitrains.co.uk  
www.digitrains.co.uk

**THE UK Model Shop Directory**  
[www.ukmodelshops.co.uk](http://www.ukmodelshops.co.uk)

The Gauge O Guild Winter Show is supported by the UK Model Shop Directory